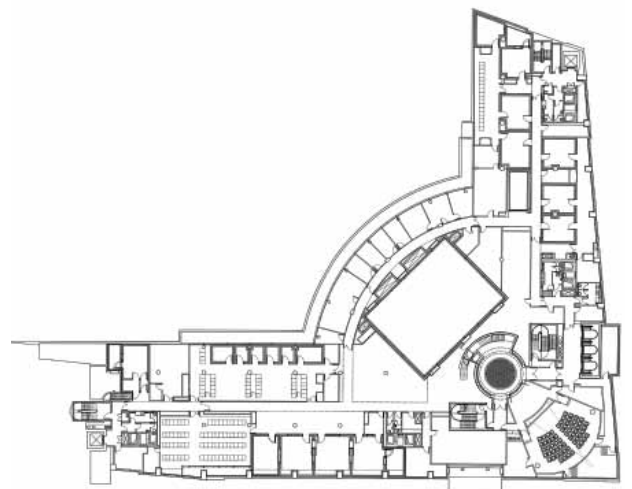


# Channel Four Television Headquarters



The design reinforces the existing street pattern, encloses a new public square, and creates a striking headquarters building which is light, energy efficient and rationally organised.



Place/Date  
**London, England 1990 - 1994**

---

Client  
**Channel 4 Television Company**

---

Cost  
**£38.5 million**

---

Gross Internal Area  
**15,000 m<sup>2</sup>**

---

Architect  
**Richard Rogers Partnership**

---

Structural Engineer  
**Ove Arup & Partners**

---

Services Engineer  
**Ove Arup & Partners**

---

Quantity Surveyor  
**Davis Langdon & Everest/Mott Green & Wall**

---

Space Planner  
**Grey Associates**

---

Acoustic Consultant  
**Sandy Brown**

---

Landscape Architect  
**Rendel & Branch**

---

Project Manager  
**Fuller Peiser**

---

Fire Consultant  
**Warrington Fire Research Consultants**

---

Acoustic Consultant  
**Sandy Brown Associates**

---

Surveyor  
**McBains Building Surveyors**

---

Main Contractor  
**Bovis Construction Ltd**

---

#### Awards

**BBC Design Awards Finalist**  
1996

**Royal Fine Art Commission Award**  
1995

**RIBA National Award**  
1995



The Channel 4 headquarters building occupies a prominent corner plot near Victoria Station, and comprises c.15,000 square metres of headquarters, broadcasting suites and a studio, an underground car park and a landscaped garden square. The building, clad in pewter-coated powder-grey aluminium and glass, occupies the northern and western sides of the site. Residential developers, using their own architects, built the apartment blocks that form the southern and eastern edges of the site.

The two four-storey wings contain office space accommodating up to 600 staff and are arranged in an L-shape, addressing the corner of the street with a curved connecting space framed by two 'satellite towers'. To the left are four conference rooms stacked

one on top of the other, and to the right lifts, boiler flues, and chiller plant, topped by transmission antennae. The entrance, through a dramatic concave suspended glazed wall, is the predominant feature of the scheme. A stepped ramp leads from the street over a glass bridge spanning the roof-light of the foyer/cinema complex below. Beyond the reception area a restaurant fills the curve with views over the garden. A sweeping roof-top terrace extends from the top-level board room.

The clients were looking for a scheme which expressed the character of their operations – innovative, socially aware and willing to take risks. The building admirably expresses the perceived identity of the organization while reflecting civic and contextual values which are central to RRP's urban architecture.